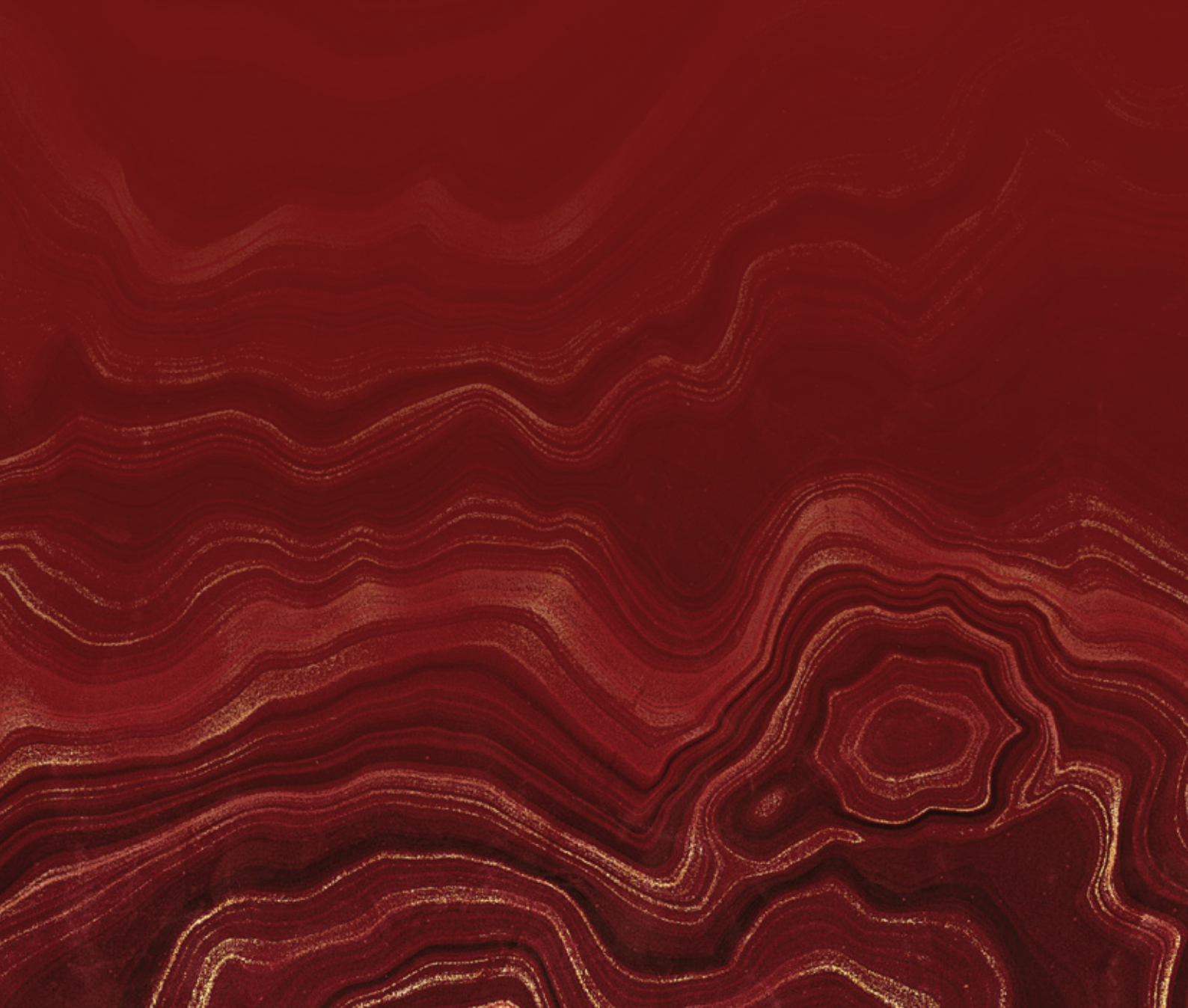


# AGATE

TOWER

THE PENINSULA





## Embrace stunning seafront *luxury*

Opulence welcomes your presence right at the impressive grand lobby and it does not end there. Let's start with the perfect location at the centre of it all that is blessed with an equally impressive seafront view. Immerse yourself in all these, and more, captivating allure right at your door front.



Breathtaking  
Panoramic  
Seafront View



The New Tunku Abdul  
Rahman Park Jetty  
within walking distance



Integrated Development  
with Shopping malls,  
F&B and Retail Outlets



Over 500m  
Seafront Perimeter  
of Boardwalk

# AGATE

TOWER

THE PENINSULA

## Kota Kinabalu's Most Iconic Seafront *Landmark*

### *Prime Properties, Prime Returns*

Experience the allure of our prime properties nestled in the vibrant Kota Kinabalu CBD, where luxury meets opportunity. Positioned to captivate tourists seeking a stylish and convenient stay, our properties promise not just a home, but an investment in the heart of tourist activity. Invest wisely, cater to the influx of tourists, and secure your prime returns today.



Elevate your  
living *expectations*  
right here

Discover opulent living &  
investment excellence, where  
*sophistication* meets *comfort*.



#### THE GRAND LOBBY

A grand lobby that transcends expectations, step through Agate Tower's entrance and be enveloped by opulence and refinement. With a dedicated drop-off point for visitors and guests, safety and privacy will always be a top priority.

#### THE FACILITIES DECK

Imagine a panoramic view of golden sunsets and a refreshing ocean breeze, right at your doorstep. An unparalleled experience where every evening paints the sky with a mesmerizing golden hue, Agate Tower is more than just a paradise; it truly is an once-in-a-lifetime immersion of breathtaking beauty.

- 408 Commercial Suites
- 28 Levels
- 24 Commercial Retail Units
- 223 Carparks (5 Levels)
- 4+1 Lifts
- Grand Lobby
- Reception & Lounge
- Infinity Pool
- Gymnasium
- Observation Deck





Meticulously crafted to complement your *lucrative lifestyle* & ready for your investment *returns*



Ready for Business after Vacant Possession



Digital Lockset for Check-in Convenience



Energy Saving System for Cost Efficient Operations



Centralized Concierge for Seamless Check-in Experience



24 Hours CCTV Security System



House-keeping & Laundry Service\*

\*T&Cs apply

With our valued design partners, we embark on a new chapter of expertise and innovation, dedicated to fuel a united vision, crafting empowering spaces of tomorrow.

## OUR AWARD-WINNING DESIGN PARTNERS

### GDP

Architecture Design by GDP Architects

[www.gdparchitects.com](http://www.gdparchitects.com)

Multidisciplinary architectural and design practice with over 30 years of innovative expertise.



"We Create Spaces That People Love"

Interior Design by RDM Design

[www.rdm-design.com](http://www.rdm-design.com)

Inspired designing firm with more than 30 years of combined experience & countless notable accomplishments.



Landscape Design by L49 Architects (Thailand)

<https://l49.co.th/>

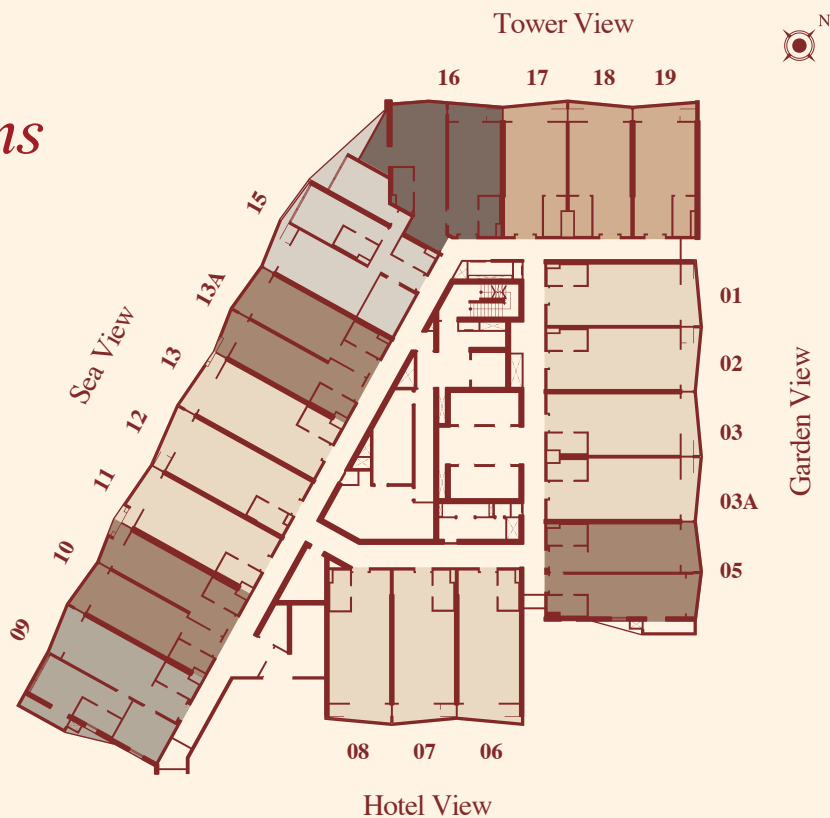
Award-winning international landscape consultant firm founded in 1989.



# Types and views to match your lifestyle *expectations*

## LEGEND

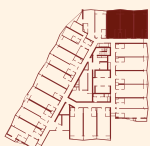
- Type A1
- Type A2
- Type B1
- Type B2
- Type B3
- Type B4



## TYPE A1 (STUDIO)

556 sq.ft.

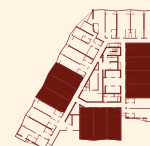
1 Bed 1 Bath



## TYPE A2 (STUDIO)

628 sq.ft.

1 Bed 1 Bath

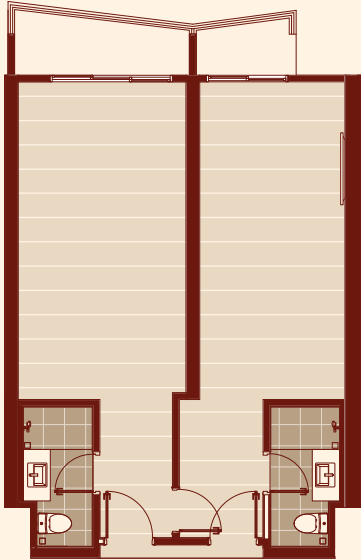


---

### TYPE B1 (DUAL KEY)

945 sq.ft.

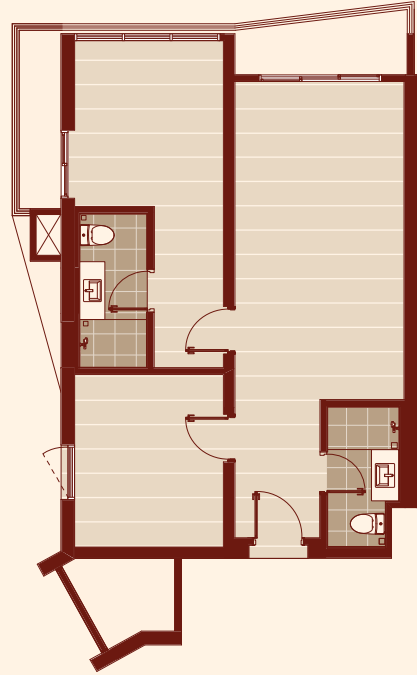
2 Bed 2 Bath



### TYPE B2 (2 ROOMS SUITE)

1,019 sq.ft.

2 Bed 2 Bath

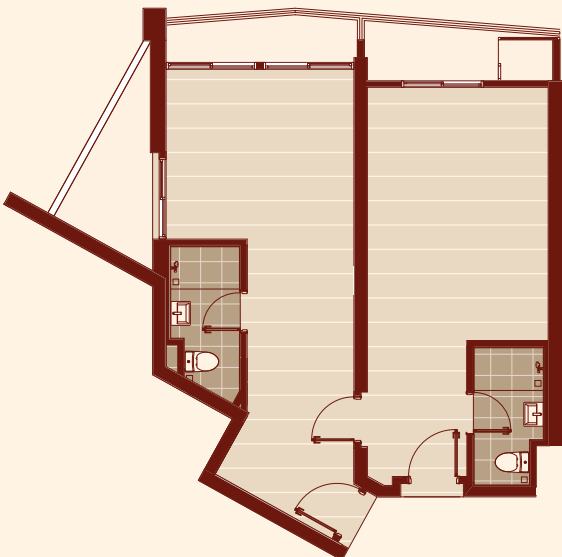


---

### TYPE B3 (DUAL KEY)

1,032 sq.ft.

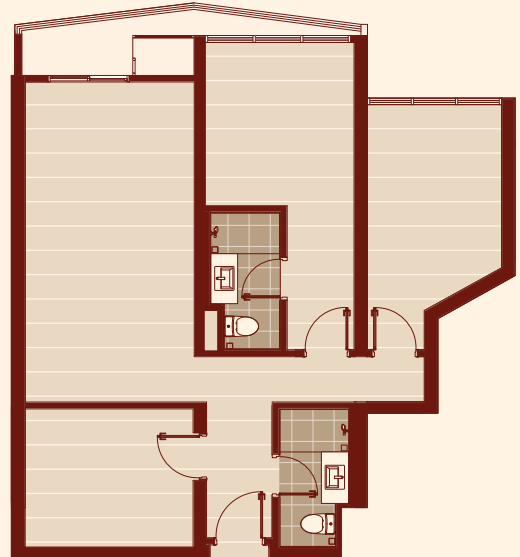
2 Bed 2 Bath



### TYPE B4 (3 ROOMS SUITE)

1,140 sq.ft.

3 Bed 2 Bath



# An impressive address in the *heart* of the city

Live, thrive, prosper in Kota Kinabalu's new CBD that is set to become an exceptional regional and international landmark set amidst a harmonious blend of natural serenity and the trendiest modernity.



FOR MORE INFORMATION



Scan QR code to learn more



**+6011-7000 6688**



[www.peninsulakk.com](http://www.peninsulakk.com)



The Peninsula Kota Kinabalu



[thepeninsulakk](https://www.instagram.com/thepeninsulakk)

**TRILLIUM**  
DEVELOPMENT SDN BHD  
2016024517 (1195456 - V)